

**Call for expressions of interest to join Equally Well's new collaborative leadership group.** The Equally Well backbone team is seeking expressions of interest from strategic thinkers, influencers, and change-makers.

Equally Well Aotearoa is a collaborative of more than 100 organisations taking action to support physical health equity for people with mental health and addiction needs. We work on a collective impact approach, connecting and championing organisations so that by working together we can create lasting change.

Facilitated by a backbone team, the Equally Well movement is now seeking to appoint a brand new collaborative leadership group to support the strategic direction and pathway forward for the collaborative.

The backbone team is seeking expressions of interest from people who care about equity and understand how to bring about system change, including people with lived experience and whānau perspectives of mental health and addiction. We encourage applications from anyone who has an interest in providing strategic direction to achieve physical health equity for people with mental health and addiction issues in Aotearoa. Key priorities to address equity will be for Māori and Pacific peoples.

We want people who are committed to achieving physical health equity, who can leverage networks and potential funding partners, and activate community-led action.

### **Equally Well successes at a glance:**

- [Ngā Waka o Matariki Equally Well Māori health strategy](#)
- Influencing the [funded flu vaccination](#)
- [SEE US campaign](#)
- Supporting the [COVID-19 Vaccine and Immunisation Peer Support Fund](#)

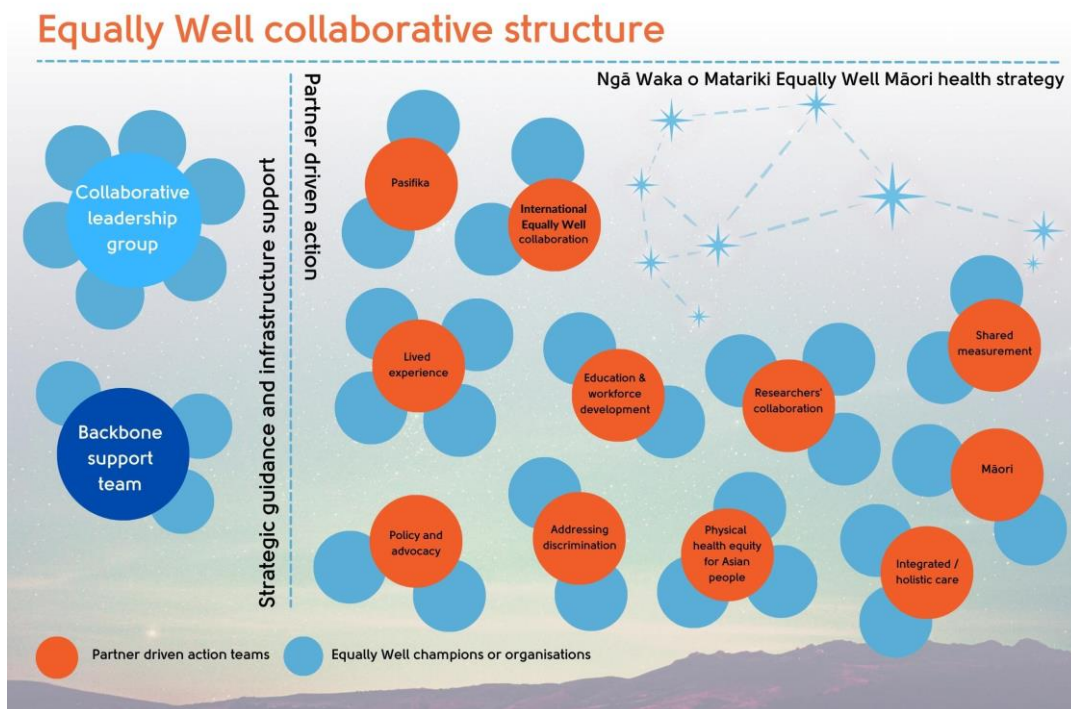
### **How Equally Well works:**

The way Equally Well works is a little different.

Imagine Equally Well as a network with interconnected hubs of action led by people and organisation's with particular interests or strengths. Partners of Equally Well lead their own action hubs, and other champions or organisations can link in with the specific actions. We can have as many hubs of action as we like – some may be time-limited, and others continue to evolve their focus dependent on the landscape.

These action hubs are interconnected and communicate across the collaborative. Our backbone team facilitates, supports and drives activity, and our new collaborative

leadership group will provide strategic oversight and guidance with support from the backbone team.



## What would be expected from you?

As this is a new function within the Equally Well collaborative, we expect the collaborative leadership group to be nimble, strategic thinkers that are keen to drive the success of the movement into the future.

We want people that have the capacity to commit to an initial 18-month period and hope that people could continue to be part of the group, regardless of any changes in where they work.

The backbone team is working hard to source sustainable funding for the continued work of Equally Well. We are seeking interest from people who can be supported by the organisation where you work for your time to attend meetings. The initial meetings will be online, and we will work with the collaborative leadership group to set the details such as when and how often to meet, and the details of the terms of reference.

Please note, you can also be an individual to apply to be on the collaborative leadership group.

Here are some initial qualities and areas of work that we see the collaborative leadership group being able to support:

- Shape and lead the collective impact strategy for Equally Well Aotearoa.

- Align the work of the backbone team and action hubs in the Equally Well community.
- Hold the commitment to physical health equity and the theory of change, and be strong ambassadors for the Equally Well movement.
- Maintain the momentum of the collaborative, particularly Ngā Waka o Matariki Māori health strategy and framework.
- Help identify the key strategic outcomes for the collaborative and what success looks like for the next five years, including the use of data to inform strategy development.
- Identify key policy levers for bringing change.
- Engage with a wide range of stakeholders.
- Mobilise resources and knowledge.
- Promote distributed leadership for Aotearoa Equally Well.
- Support the growth and sustainability of the Aotearoa Equally Well movement.
- Support consistency of messages about the Equally Well collaborative, locally, nationally, and internationally.
- Support the leadership role that the Aotearoa Equally Well collaborative has internationally.

Please do email us if you have any further questions (contact details below).

### **Expression of interest details:**

Please enter your expression of interest online [here](#). The closing date for expressions of interest 5 pm, Tuesday 18 April 2023.

The questions you will need to fill in ask about:

- Who you are
- Why you are interested in joining the Equally Well collaborative leadership group
- What skills and experience you will bring to the group

If you have any further questions, we are more than happy to answer them. Please email the backbone team at [info@equallywell.co.nz](mailto:info@equallywell.co.nz).